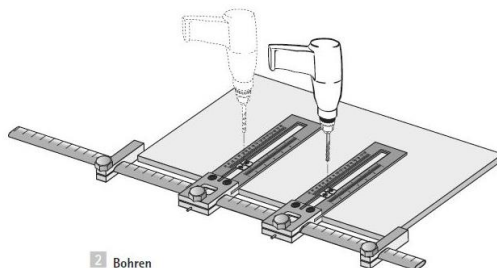
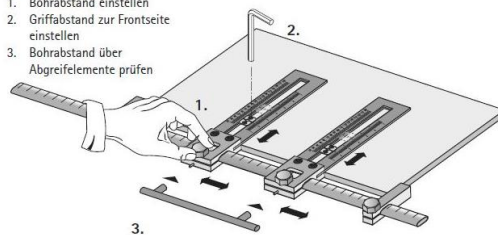


Rail Accura 500mm

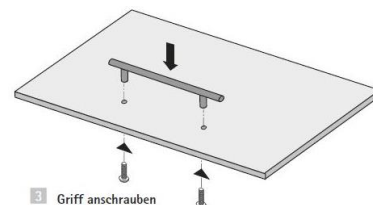
#464352



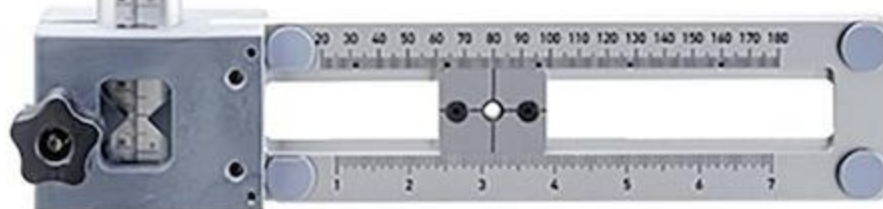
- 1. Bohrlehre einstellen
- 1. Bohrabstand einstellen
- 2. Griffabstand zur Frontseite einstellen
- 3. Bohrabstand über Abgreifelemente prüfen



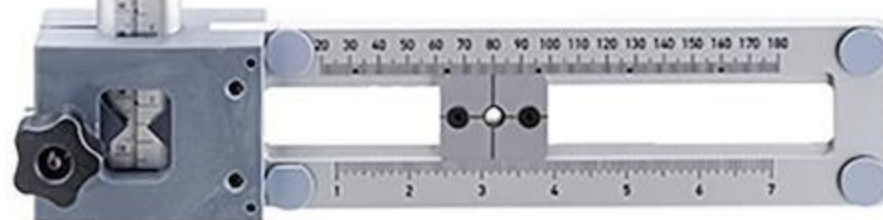
2 Bohren



3 Griff anschrauben



Corps de perçage pour poignées
#462740 (2x)



Butée (démontées)
#460624



COMMONWEALTH PLYWOOD
DISTRIBUTION